

# Spring 2016 Family Matinee Program

VALLEY CINEMA • 9360 SW BEAVERTON-HILLSDALE HWY • BEAVERTON, OR • 503-296-6843

The Valley Cinema is proud to present the annual **Spring Family Matinee Program**. Matinee Season Tickets admitting children to all 10 movies are now available through selected school PTA's or the theater box office for only \$10.00, just \$1.00 per movie. Otherwise, the price for tickets purchased separately will be \$4.75 for each show. No \$1.00 tickets are available on Mondays. PARENTS accompanied with children holding season tickets are admitted **FREE!** Adults without children will not be admitted to the matinees in this program. Children 3 and over must have tickets to be admitted.

**NO OUTSIDE FOOD OR BEVERAGES WILL BE ALLOWED IN THE THEATER.**

Matinees will be shown each Saturday at 12:00 noon and 2:30pm; Sunday 9:30am, 12:00 noon, 2:30pm and 5:30pm. Showings Monday and Tuesday will be at 5:30pm. The box office opens at 11:30am Saturday; Sunday at 9:00am, and 5:00pm on Monday and Tuesday. Please arrive early for best seating. Movie titles are subject to change based on availability.

Week 1 Feb 20 - 23

## The Peanuts Movie

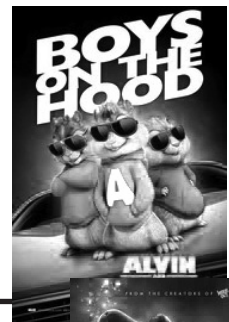
G 85 minutes



Week 6 Mar 26 - 29

## Alvin and the Chipmunks: The Road Chip

G 90 minutes



Week 2 Feb 27 - Mar 1

## Hotel Transylvania

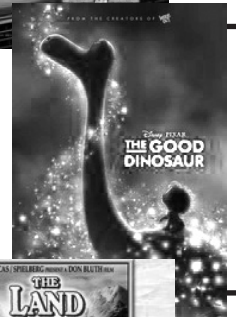
PG 90 minutes



Week 7 Apr 2 - 5

## The Good Dinosaur

PG 100 minutes



Week 3 Mar 5 - 8

## Goosebumps

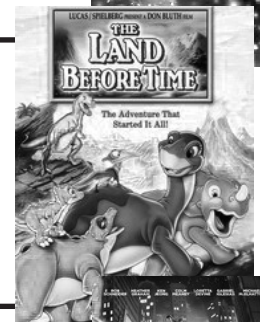
PG 105 minutes



Week 8 Apr 9 - 12

## The Land Before Time (1988)

G 70 minutes



Week 4 Mar 12 - 15

## Pan

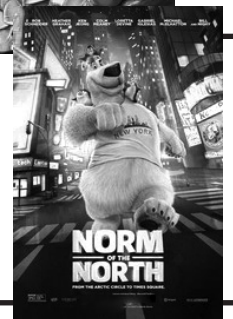
PG 85 minutes



Week 9 Apr 16 - 19

## Norm of the North

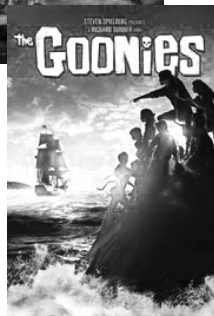
PG 90 minutes



Week 5 Mar 19 - 22

## Goonies

PG 115 minutes



Week 10 Apr 23 - 26

## Surprise Feature!

G or PG Rated

Like us on Facebook at Valley Cinema-Pub



\*\*\*\*\* DRAWING FOR TWO \$50.00 GIFT CERTIFICATES \*\*\*\*\*

Please deposit your registration card by April 20th, 2016 at the theater for the drawing.