

Hiteon Highlights

May 19, 2017

Hiteon Elementary School
13800 SW Brockman Road
Beaverton, OR 97008
Telephone: (503) 356-2140
Fax: (503) 356-2145
Attendance: (503) 356-2141



Hiteon Mission Statement

Hiteon is a community dedicated to providing an educational experience in which everyone can reach their full potential and make positive societal contributions. We strive to enhance personal, community, and global identities while developing life-long learners.



Upcoming Events

May 2017

- Smarter Balance Testing Grade 3-5
- 24th Passport Check
- 24th Family Art & Culture Night
- 25th Passport Check
- 26th Assessment Day - No Students
- 29th Memorial Day - School Closed
- 30th FUN RUN Game Truck Reward
- 31st Music Performance - Primary Wing
Hassold 6:00 & Christenson 6:45

June 2017

- 1st Music Performance - Gym
Bernert & Carlton 6:15
- 7th PTC General Meeting
- 9th Coffee with the Principals 8:15-8:45am
- 14th End of Year School Assembly
- 16th Field Day
- 21st 5th Grade Party
- 20th & 21st End of Year Parties
- 22nd LAST DAY OF SCHOOL
- 22nd Report Cards Go Home

Principal's Message:

Dear Hiteon Families,

This week we held our Fun Run prize assemblies and celebrated our largest earnings in Hiteon history with a whopping \$60,481! Ms. Warren and Mrs. Arbow had a blast being sprayed with Silly String to celebrate crushing our school goal of \$45,000. Thank you to all of our Fun Run committee volunteers and especially Tammy Green and Beth Koehler, our Fun Run committee chairs. Furthermore, thank you to all who donated to support our school!

Next Monday and Tuesday, we welcome the much-anticipated International Baccalaureate visitors as part of our PYP Authorization visit. The IB visitors will be observing in classrooms, meeting with teachers and administrators, and even interacting a little with students. We are excited to share our journey and PYP accomplishments with them and receive feedback for becoming an authorized school. We hope to share our next steps with you soon.

We continue to work through our staffing for the 2017-18 school year and hope to have some team and teacher announcements for you soon. We will also keep you apprised of back to school logistics throughout the summer, and as expected, you will receive your teacher announcements in the mail mid to late August.

We hope you all have a great holiday weekend next weekend and enjoy the sun.

Sincerely,
Monica Arbow and Meghan Warren



Christine's Counselor Corner

Hiteon High Flyers and Home Plate Youth Services

Our High Flyers have chosen Home Plate Youth Services as their community service project. It provides drop-in centers and street outreach to homeless individuals between the ages of 12-24 in Washington County. They indicate that Beaverton School District has the highest number of homeless youth in all of Oregon. Home Plate goes into the community to find and connect with homeless young people. They like to provide youth with a number of items that they need including hygiene items.

High Flyers will lead our school-wide campaign to collect hygiene items for Home Plate. Several years ago, Hiteon students collected over 1,200 hygiene items. Home Plate was thrilled as this saved them a great deal of money! Let's see if we can match or surpass that this year.

Look for more information on the hygiene items drive which will run from June 5th-9th!

Summer Meal Program

The Summer Meal Program is a federally funded nutrition program that offers breakfast and lunch at no cost to children and youth aged 1–18 years. Adults may eat for \$3.50. There are a number of locations in Beaverton where your student/s may have a meal this summer. The nearest one to Hiteon is at Greenway Elementary School. Some sites serve both breakfast and lunch. Lunches will be served from Monday-Friday, June 26th through August 18th. Check out this link for more information including a list of schools and other sites (click on "Summer Meal Site List").

<https://www.beaverton.k12.or.us/depts/nutserv/Pages/summer-meals.aspx>

As always, please feel free to contact me at christine_purvis@beaverton.k12.or.us or call me at 503.356.2146 if I may be of assistance in any way.

NOW ENROLLING KINDERGARTEN FOR 2017-2018 SCHOOL YEAR



**If you, your neighbors,
family or friends have
kinder ready children in our
attendance area, come by
Hiteon's Main Office to
pick up an enrollment
packet.**

5th grade Physical Education Student Survey

Hi 5th grade parents. All 5th graders will be served in an online nutrition and PE survey. The student survey on the website Welnet will open on May 10th - June 9th. We want to notify parents that this survey will take place during classroom time. Students will access the survey on their chrome books.

We will be emailing 5th grade parents directly with more information and a link to view the survey.



Testing in Progress
Please do not enter



It is extremely important that during state testing in grades 3rd – 5th that parents/volunteers **DO NOT ENTER CLASSROOMS.**

Signage has been placed on classroom doors to inform people that testing is in progress and to not enter.

When people enter a classroom during testing it is considered 'TESTING ENPROPRIETY'.

Early Release/Teacher Collaboration

Starting in September 2017, the Beaverton School District will implement a 90-minute early release on Wednesday afternoons to allow teachers time to collaborate and participate in professional development opportunities. The schedule change is a result of the new contract between the District and the Beaverton Education Association. The agreement adds nine student days over the next three years.

We recognize the impact this change will have on families and childcare may be a challenge. We are exploring opportunities for additional after school activities with the Beaverton Education Foundation and other community partners.

The District recognizes some of the challenges this transition may create and has already begun the planning process. Some of those steps include weekly planning meetings, conducting parent focus groups and regular communications about the change. Much of the work is focused on determining how to support families and students in the transition.

This will be new for all of us at Hiteon and will take some proactive planning to ensure this transition is a smooth one. We will encourage dialogue with you, our parent community, through Principal coffee chats, PTO meetings, surveys, and conversation. We will talk about this transition frequently this year as we begin our planning.

The District has developed an [Early Release/Teacher Collaboration webpage](#). There is a link to this page on our school webpage in the "School Resources" box. The webpage includes an [FAQ](#) that may contain answers to many of your questions.

Planning for Early Release/Teacher Collaboration will continue to take place throughout the 2016-2017 school year. Please check the District's BSD Briefs newsletter, our school newsletter and the Early Release/Teacher Collaboration webpage for updates.

YEAR END MEDICATION PICK UP

Please be prepared to pick up any medications that may be at school for your students. All medication must be picked up by the last day of school, **June 22nd**.

District policy is that all medications (prescription and over the counter) will be discarded and disposed of at the end of each school year. The school is not responsible for any medications that are discarded.

Medications include but not limited to inhalers, epi-pens, prescription pills, over the counter cold syrups/pills, headache medication, cough drops/ syrups, etc...

We are aware that some of these items are expensive and want to assure we give parents ample notice and time to pick up before they are discarded.

TOO SICK FOR SCHOOL?



Below are some guidelines to help you make the decision about when to keep your child home from school. The recommendations are based on the guidelines provided by the Communicable Disease Program of the Washington County Department of Health and Human Services. They were developed to help prevent the spread of potentially contagious disease.



FEVER

With fever greater than 100.5° F; student may return when fever-free for 24 hours (WITHOUT use of fever-reducing medicine).



VOMITING/DIARRHEA

Any unexplained vomiting episode. May return 24 hours after last episode. Diarrhea equals three or more unexplained episodes of watery or loose stools in 24 hours OR sudden onset of loose stools. May return 24 hours after last episode.



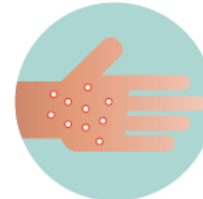
COUGH

Serious, sustained coughing, shortness of breath, or difficulty breathing.



RASH

Any new rash accompanied by a fever. May return after rash goes away or clearance given by a health care provider.



SKIN LESIONS/SORES

Drainage from a sore that cannot be contained within a bandage OR sores are increasing in size OR new sores are developing day-to-day.



OTHER

Symptoms that prevent the student from active participation in usual school activities OR student is requiring more care than school that can safely provide.

Home is the best place for a child who is ill. If your child is sick with a diagnosed communicable disease, please notify the school as soon as possible. This notification will greatly assist others who, due to medical reasons and/or treatments, have weakened immune systems and may require immediate and specialized care.



FAMILY ART NIGHT

Wednesday May 24th, 6pm to 8pm

Bring the family for an evening of fun. Art night is a chance to participate with your family in fun activities.

This year we will offer: Button Making, Pipe Cleaner Design, Finger Print Bookmarks, African Crayon Art, Emoji Magnets, A construction Paper Strip Art, and Rubber Band Banjos!

If you are interested in volunteering we will have sign ups on [myvolunteerpage](#) soon.



Dear Hiteon Parents and Guardians,

As you may know, Beaverton School District received a two year Safe Routes to School grant. The purpose of program is to make walking and biking to school safe, convenient and fun.

One of the requirements of the grant is to get some information about how your students are now traveling to school and what their parents/ guardians think about the routes to school. This survey will come to you one more time after this, next May.

The following [link](#) was generated from the National Safe Routes to School Center and will be combined with classroom travel tallies to give us a good picture of how students are getting to and from schools throughout the district.

The school's survey will be open for responses for three weeks starting May 1.

We appreciate your help in giving us information to make our program effective for all Beaverton School District students.

Estimados Padres y Tutores de Hiteon:

Posiblemente ustedes saben de que el Distrito Escolar de Beaverton recibió fondos escolares por dos años para el programa *Safe Routes*. El propósito de este programa es lograr que el caminar y andar en bicicleta sea seguro, conveniente y divertido.

Uno de los requisitos de este fondo es obtener información de cómo los estudiantes actualmente están llegando a la escuela y cuál opinan los padres/tutores del camino a la escuela. Se les enviarán tres encuestas en los próximos dos años.

El siguiente [enlace](#) fue creado por Centro Nacional para Rutas Seguras a la Escuela y se combinará e indicará con puntos por clase. De esta manera tenderemos una mejor idea de cómo los estudiantes están llegando de ida y vuelta a la escuela en todo el distrito.

La respuesta a la encuesta escolar estará disponible por tres semanas para responder comenzando el 1 de mayo.

Agradecemos su apoyo al proveernos información que hará que nuestro programa sea efectivo en todos los estudiantes del Distrito Escolar de Beaverton.

Thank you,
Gracias,

Lynne Mutrie
Beaverton School District
Safe Routes to School Program
503-329-6469



"Join Play.Fit.Fun Tuesday after school and get your kids moving! It's like field day crashed into P.E. and kids love it."

www.playfitfun.com
Spencer@playfitfun.com
971-732-4745

HITEON AFTER SCHOOL ACTIVITIES & COMMUNITY FLIERS

We will begin to add information in this section of our newsletter for the various After-School activities that only happen on our Hiteon campus.

Champions Before and After School, break camps, no school days, and Summer Camp:
www.discoverchampions.com



The link for other district wide activities can be found on the district website. Copy this link in your browser [Beaverton School District's Approved Fliers Page](#). A complete list of all the fliers approved by the district are listed by month approved, activity and the school.

If you are interested in having a flier reviewed for approval you will find the review process on this same link. Once fliers are approved, you are welcome to bring copies for the Community Shelf located in Hiteon's Main Office. If your activity will take place on Hiteon's campus, email the flier to Martha_spinks@beaverton.k12.or.us the first or third Wednesday for insertion in our newsletter.