

Hiteon Highlights

December 9, 2016



Hiteon Mission Statement

Hiteon is a community dedicated to providing an educational experience in which everyone can reach their full potential and make positive societal contributions. We strive to enhance personal, community, and global identities while developing life-long learners.

Hiteon Elementary School
13800 SW Brockman Road
Beaverton, OR 97008
Telephone: (503) 356-2140
Fax: (503) 356-2145
Attendance: (503) 356-2141



Principal's Message:

Dear Hiteon Families,

We hope this newsletter finds you and your family warm today. Our choir ended their Wednesday night concert with the song titled, "Bring on the Snow," and it sure was timely! I would like to give a shout out to all of our choir students, Mrs. Henry, and Mrs. McCulley, who put in several hours after school to prepare for a wonderful program for our neighboring retirement center at Canfield, a choir collaboration at Southridge High School with other Beaverton choirs, and our own concert here at Hiteon. Thank you for putting us all in the spirit of the holidays.

As we round the corner into the next Trimester, we continue to stay focused on our academic growth through the lens of PYP transdisciplinary themes and personal growth through the Learner Profiles. This month's Learner Profile is Thinker. To be a thinker means to solve problems independently, make good decisions, imagine many solutions to a question or challenge, and think creatively and critically. Furthermore, we are staying focused on student attendance. On average, we expect students to be absent no more than 5% of the school year. We have a total of 177 instructional days for students in Beaverton, which generally means no more than 9 absences and 9 tardies by the end of the year. This equates to about one absence per month.

Upcoming Events

December 2107

- 13th Choir-Canfield Retirement
11:45am-12:15pm (5th grade)
- 15th Passport Check
- 16th Passport Check
- Winter Classroom Parties
- 19th-30th Winter Break - School Closed



Principal's Message continued:

Tardies can be just as harmful. The first 10 minutes of the day are some of the most important, because students are getting settled with their peers and learning what the focus and schedule is for the day, and then instruction begins! Time that is not spent in school equates to instructional time and opportunities being missed. Here is some information that helps demonstrate the negative impact absences and tardies can have on a student:

Attendance rate for one school year	Days Absent	Equates to weeks absent	Equates to # of lessons missed
95%	9	1.75 weeks	54
90%	18	3.5 weeks	108
85%	27	5.5 weeks	162
80%	35	7 weeks	210

Mrs. Warren and Mrs. Arbow, our school administrators, Mrs. Purvis, our school counselor, and Mrs. Altenburg, our school nurse are all available to meet to help sort out issues, including health issues, that might be impacting attendance and provide supports to help increase attendance and tardy rates.

We wish you a month of family, friends, and good tidings. Happy Holidays!

Warmly,
Monica Arbow and Meghan Warren



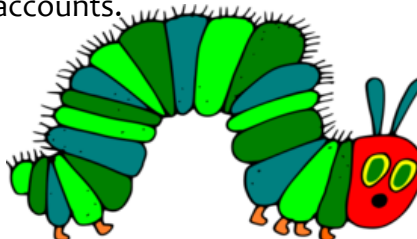
December Library News

Thank you to all the parents and grandparents that have been helping me in the library! I appreciate the help organizing, shelving, and reading to our Hiteon students. It is greatly appreciated!

The Kindergartners, 1st, and 2nd graders have been participating in helping to name our new library pet –The Very Hungry Caterpillar. Voting will be done this week, and an announcement will be made to name our new pet and to congratulate the class that came up with the name.

I have been doing lessons for 3rd, 4th, and 5th grade classes to be able to reserve/hold/save books here at the Hiteon library. This can be done in the library or from the chrome books they have been using. They can also view what they have out or overdue at our library. Please challenge them to show you how to view their accounts.

Have a fun , family winter break,
Mary Beth Sadlouskos



LANGUAGE & CULTURE

Nǐ hǎo!

Wow! It is hard to believe it is already 十二月(12th month, otherwise known as December).

This month...

Kindergartners have been practicing counting and character number recognition, color words and high frequency vocabulary.

1st and 2nd graders have been having fun learning body vocabulary. (e.g., head, shoulders, eyes, ears)

3rd, 4th and 5th graders focus has been on oral language. Students have gained momentum in their Better Chinese readers!

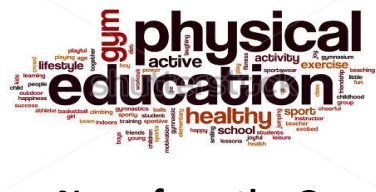
Please see the Fall Trimester Language newsletter for a vocabulary list and additional details of our classroom learning. The newsletter was sent home in your child's report card envelope. If you have more than one child attending Hiteon, the newsletter should have been sent home with the youngest Hiteon student.

When we return in January, we will begin our Chinese New Year unit of study.

Have a wonderful Winter break!

Strub lǎo shī

*Primary children often use old magazines in class. If you have any magazines headed for the recycling bin, please send them my way. Magazines with lots of kid friendly photos work best.



News from the Gym

The Hiteon bowling alley is now open! We are excited to be starting our bowling unit. We will be practicing different bowling skills, etiquette, and give students a variety of challenges. Our lessons will also incorporate fitness activities and some throwing and catching activities for warm-up.

Prior to winter break, students will be receiving their "Winter Break 60" calendars. We are encouraging students to be physically active for 60 minutes or more every day or almost every day during the break. They love it when you are active with them, so get the family involved!

Mrs. Hansmann and Mrs. Hamilton

COMMUNITY FLIERS

For Winter activities, sports, camps and community events, please copy this link in your browser [Beaverton School District's Approved Fliers Page](#). You will find a complete list of all the fliers that have been approved by the District for distribution. Due to administrative and cost limitations we are unable to provide hard copies of fliers.

If you are interested in having a flier reviewed for approval you will find the review process on this same link. Once fliers are approved, you are welcome to bring copies for the Community Shelf located in Hiteon's Main Office.

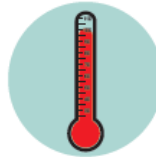
Here is a little reminder about the District's TOO SICK FOR SCHOOL policies.

Please review and follow if your little one becomes sick.

TOO SICK FOR SCHOOL?



Below are some guidelines to help you make the decision about when to keep your child home from school. The recommendations are based on the guidelines provided by the Communicable Disease Program of the Washington County Department of Health and Human Services. They were developed to help prevent the spread of potentially contagious disease.



FEVER

With fever greater than 100.5° F, student may return when fever-free for 24 hours (WITHOUT use of fever-reducing medicine)



VOMITING/DIARRHEA

Any unexplained vomiting episode. May return 24 hours after last episode. Diarrhea = three or more unexplained episodes of watery or loose stools in 24 hours OR sudden onset of loose stools. May return 24 hours after last episode.



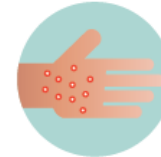
COUGH

Serious, sustained coughing, shortness of breath, or difficulty breathing.



RASH

Any new rash accompanied by a fever. May return after rash goes away or clearance given by a health care provider.



SKIN LESIONS/SORES

Drainage from a sore that cannot be contained within a bandage OR sores are increasing in size OR new sores are developing day-to-day.



OTHER

Symptoms that prevent the student from active participation in usual school activities OR student is requiring more care than school that can safely provide.

Home is the best place for a child who is ill. If your child is sick with a diagnosed communicable disease, please notify the school as soon as possible. This notification will greatly assist others who, due to medical reasons and/or treatments, have weakened immune systems and may require immediate and specialized care.



Inclement Weather Information Messages Beaverton School District Parents/Guardians/Community 2016 - 2017

School closure or delayed start decisions will typically be made and posted on the District website by 5:15 a.m., then communicated to local media including TV, radio, electronic and print. Information is also sent to parents via SchoolMessenger and posted to Facebook and Twitter.

We encourage and support families to make attendance decisions for your child(ren) based on your own assessment of travel conditions at your location.

When all district schools and facilities are closed

- All daytime and evening activities/events are cancelled.

When there is a 2-hour delay in opening school

- All schools will open two hours later than regularly scheduled.
- The following classes are cancelled:
 - Morning early intervention
- Buses are on snow routes.
- There will be no bus service for Bonny Slope and Nancy Ryles elementary schools and Terra Nova High School.
- If weather conditions substantially improve by 11:00 a.m., any changes in afternoon bus service will be communicated no later than 1:00 p.m.

When school is on time and buses are on snow routes

- All schools operate on regular daily schedules.
- There will be no bus service for Bonny Slope and Nancy Ryles elementary schools and Terra Nova High School.
- If weather conditions substantially improve by 11:00 a.m. any changes in afternoon bus service will be communicated no later than 1:00 p.m.

When weather conditions necessitate an early closure of schools

- We encourage you to refer to our website and local media for more detailed information.
- All daytime and evening activities/events are cancelled.

Here is a reminder of the District's information sheet regarding inclement weather.

You can find more information at the district website.

BUNDLE UP FOR COLD WEATHER

It's starting to get really cold. Please make sure that your student comes to school bundled up warm.

Also, write your student's name in his/her jackets in case they end up in the Lost & Found we can try to get them returned.